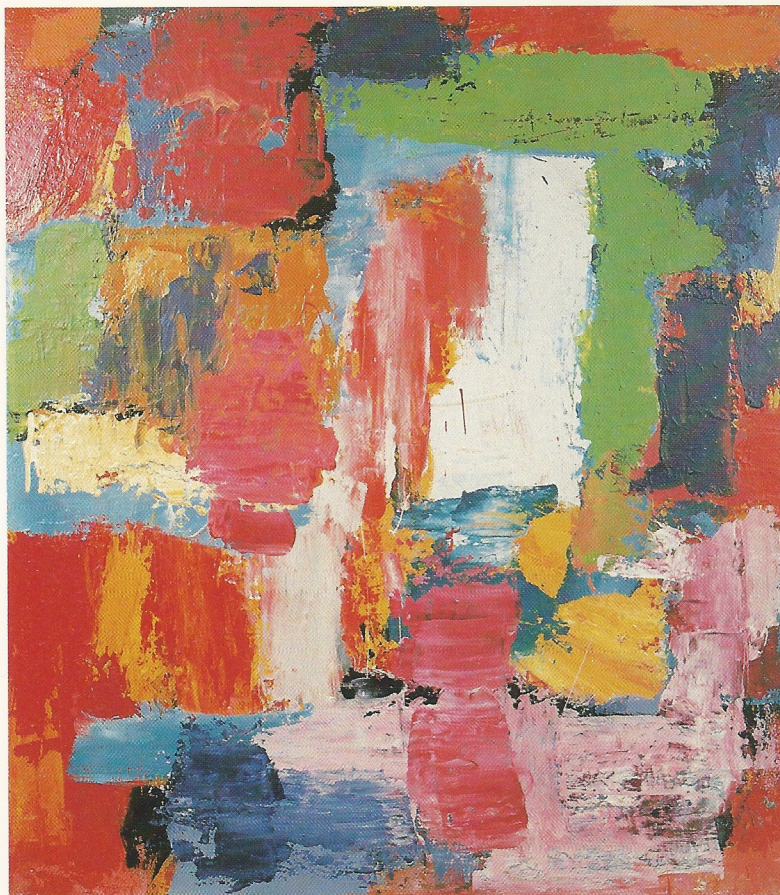


DONNAGH McKENNA



Paintings since 1980

Warwick Arts Trust
Pimlico London

26 March – 27 April 1986
(closed 28-30 March)

Private View: Monday 24 March, 6-8 pm



Biography

born in Manchester, of
Dublin parents

studied at Manchester College of
Arts, at the Extra-Mural
Department of Manchester
University, and at the Slade
School of Fine art, London

taught in art schools in London
from 1962 to 1970.

Photograph by Sten M Rosenlund

Before 1980, work exhibited at

Peterloo Gallery, Manchester; *John Moores Exhibition*, Walker Art
Gallery, Liverpool; AIA Gallery, *Young Contemporaries*, and the
National Theatre, London; *Irish Art in the 'Seventies*, a Caldwell
Gallery exhibition touring in Ireland

Since 1980, work exhibited at

The International Connection, The Round House, London (part of the
1980 Festival 'A Sense of Ireland')

Contemporary Artists in Camden, Camden Arts Centre, London 1981

English Expressionism, Warwick Arts Trust, London 1984

Tyrone Guthrie Centre, Monaghan, Ireland 1984 & 1985

The Joy of Paint, Warwick Arts Trust, London, and Bede Gallery,
Jarrow 1985

Represented in the following collections in London

Arts Council of Great Britain

Camden Council

St Thomas' Hospital

Tate Gallery

Warwick Arts Trust

British Rail

Charles Barker Group

Deutsches Bank

European and Arabic Bank

Irish Export Board

and the embassies of Denmark, Finland and Ireland

also represented in

the Irish Arts Council and Annaghmakerrig Collections, Ireland, and in the E. J. Power Collection, the Hammer Collection, and other private collections in Australia, Canada, Denmark, France, Germany, Great Britain, Ireland, New Zealand, Sweden and the U.S.A.

Catalogue List

(all works are acrylic on canvas)

1

Jevington (Spring)

90 × 78 ins

2

Jevington (Autumn)

90 × 78 ins

3

Nordic Deep

84 × 72 ins

4

Red Rood

48 × 42 ins

5 illustrated on front cover

Studio Summer Morn

48 × 42 ins

6 illustrated on back cover

Hanni's Garden

36 × 36 ins

7

Christiania Blue

72 × 48 ins

8

Tomás Indigo

60 × 48 ins

9

Summer (from The Spring Quartet)

60 × 36 ins

10

Forelight

84 × 72 ins

11

Calling Low

60 × 56 ins

12

Fathom Five

72 × 60 ins

13

Attic 1

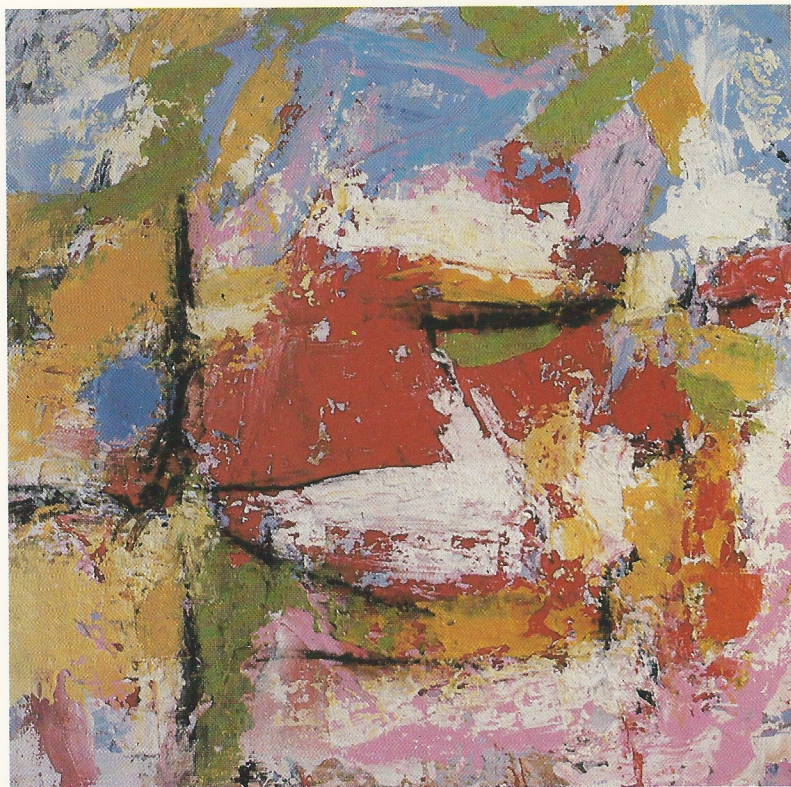
72 × 60 ins

14

Sea Sleep

28 × 24 ins

All works are for sale



6 Hanni's Garden

WARWICK ARTS TRUST

33 Warwick Square
St. George's Drive
London SW1V 2AQ
tel. (01) 834 7856

*open Wednesdays to Sundays,
10 am to 5 pm
closed Mondays and Tuesdays
admission free*

*please note that the Trust will be closed over Easter from 28 to 30 March,
inclusive.*

